

CLIMATE ACTION PLAN

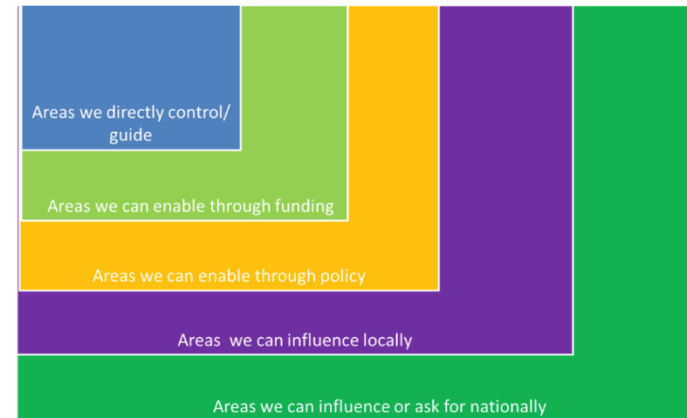
First issue July 2022

Introduction

In common with thousands of others, the Town Council has declared a climate emergency, and recognised the urgency for action. Tackling climate change is the defining challenge of our time. But, whilst many are waking up to the magnitude of the task which means change at every level of society, the pace of change and the ambition, is still the subject of continued debate. The Government's current target is for carbon neutrality by 2050, although, in the lead up to the 2021 COP26 summit, the international community is seeking to set more challenging goals. Cornwall Council as a large unitary council, has set a more challenging ambition of reaching carbon neutrality by 2030.

Some of Cornwall's programmes are ambitious, for example the forest for Cornwall aiming to develop 8,000 hectares of new trees, a social housing retrofit programme and comprehensive new planning policies. Cornwall Council has set out a number of detailed plans and programmes as a roadmap of how it intends to achieve its 2030 goal.¹

This action plan does not aim to replicate the main body of work which is already taking place at national or unitary level. But the journey towards carbon neutrality requires action by everyone at all levels of society from the international community right down to individuals living in small communities. Whilst we can all contribute, no one individual state, sector or individual can achieve it on their own.



Local Councils have numerous powers and strong links with their communities, working at the most local level of Government. They are uniquely placed to work at grass roots community level and there are many examples of local councils delivering exciting local projects to do their bit. But in developing an action plan for the Town Council, it is important to be clear about what Town and Parishes can achieve on their own and in partnership and to set achievable and realistic goals. Cornwall Council has defined *spheres of influence* to provide clarity on how they can intervene on climate action and this plan follows similar principles.

¹ Carbon reduction can broadly be achieved either by reducing carbon generating activities or capturing the carbon and greenhouse gases we produce so they do not enter the atmosphere.

WHAT ACTION CAN WE TAKE ?

A small town council cannot achieve significant levels of carbon reduction on its own, but it can deliver change and there are also many areas which are directly within its control:

- the resources it uses
- the goods and services it commissions
- the properties and buildings it operates
- the services it manages
- how the staff and culture of the organisation work

HOW CAN WE WORK WITH OTHERS ?

In addition, to very direct interventions, even at local level Town Councils can work with others, using a wider range of tools; innovation, partnership and fund raising to achieve far more.

Governance: It can ensure that the climate emergency is a consideration in the decisions it makes on a range of issues

Leadership: It can lead by example, switching to renewable forms of energy or encouraging the community to sign up to the 10 Cornwall pledges

Funding: it can secure additional grant funding or provide it to others to help meet climate change goals. It also commissions specific services where it can ensure that funding is conditional upon a response to climate change

Policy Development : It has a role in local policy development, for example in the review of the Neighbourhood Plan

Influencing: It can add its voice to others, seeking to influence change at local level, through partnership or at national level, for example in the recent campaign on the Climate and Ecology Bill in a call for action.

Partnership and Innovation: It can work with partners, to develop innovation solutions to climate challenges which can be delivered even at the most level, for example seeking to solve the challenge of commercial waste.

WHERE ARE WE NOW ?

In order to deliver an action plan, the Council need to understand the baseline information. This will help us focus on areas which will make most difference. Work has been carried out at Cornwall level. In June 2019, Cornwall Council commissioned a Greenhouse Gas Inventory for 2008 to 2016. This highlights the sectors that are most responsible for carbon emissions in Cornwall, which are broadly in line with national figures. The inventory includes other greenhouse gases besides CO₂, attributing CO₂- equivalent (i.e. CO₂e) figures for methane, nitrous oxide, and fluorinated gas emissions. The overall figure for Cornwall in 2016 was around 4 megatonnes (4,000,000 tonnes) of CO₂. Exeter University's inventory suggests that in Cornwall we have reduced our carbon footprint by just under 19% between 2008 and 2016. This is roughly equivalent to taking 200,000 passenger vehicles off the road. The Council's climate change action plan states that:

At least two thirds of the emission reductions having been achieved by decarbonising electricity. With the remainder mostly reduced energy use associated with the heating homes and businesses. Minimal reductions have occurred in transport, this is now Cornwall's largest emitting sector making up 25% (approx. 1 MtCO₂). Although there have been emissions reductions in the sector, agriculture is also growing proportionally in its percentage contribution to Cornwall's carbon footprint as other sectors reduce their proportional contribution (such as the production of electricity).

Balancing out some of our emissions an amount of carbon dioxide approximately equivalent to 3.5% of Cornwall's total emissions footprint was captured by land use and forestry activities in 2016.

Given the relative successes in renewable electricity and reducing domestic energy use, Cornwall Council's current plan aims to re-focus its efforts on other sectors, especially emissions from transport, agriculture, heating, and waste, as well as increasing the carbon draw down from the natural environment.

St Ives' Carbon Footprint

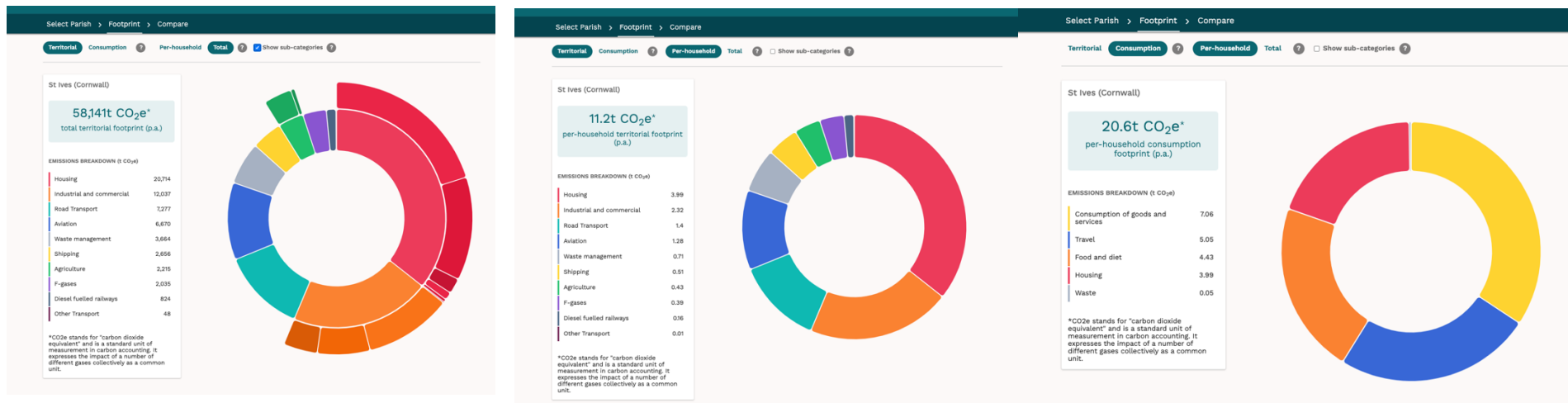
There are two pieces of research which can help the Council establish its baseline at parish level.

Impact Carbon Calculator

In 2020 the Centre for Sustainable Energy as part of their Climate Emergency Support Programme, working jointly with the University of Exeter's Centre for Energy & the Environment developed the impact community carbon calculator. The tool was built in response to a demand from smaller settlements to have robust and accurate data on their carbon footprint, so that they can best direct their efforts to tackle the climate emergency. It also recognised that local councils can support focussed community based action to cut local emissions. The data has gaps and

much involves extrapolating data at larger geographical level to achieve a best fit. But it enables consistent baseline comparisons to be made across areas.

The following three graphs summarise the findings from the calculator for St Ives. In line with the Cornwall Council baseline, the key areas for emissions are from housing and commercial businesses. The Council doesn't have the ability to reduce household energy consumption directly, but it can seek to influence it by supporting wider government initiatives for retrofit programmes and further development of renewables and by encouraging all households to sign up to the 10 pledge. In terms of commercial businesses, the Council can lead by example in reducing its own business energy use and also through working with BID and local businesses on innovative solutions from recycling to reducing single use plastics to local sourcing. Significantly, transport is also a key emissions sector and the Council's emerging work to establish a cross cutting transport group to lead the development of a low carbon transport strategy could make a very significant contribution. Given the large numbers of summer visitors to the town, campaigns and partnerships with businesses to change how visitors buy goods and services and also use their private cars on holiday and dispose of waste could have a noticeable impact on shifting behaviours.



St Ives Climate Action commissioned an energy and carbon audit

In 2020 St Ives Climate Action commissioned an energy and carbon audit which was also supported by the Council. The study provides some more finely grained local information about types of fuel used within domestic and commercial properties. Whilst many sectors and activities

contribute towards the area's carbon footprint, the three largest ones by far are commercial and domestic energy consumption and transport. Reducing fossil fuels for transport, improving thermal efficiency in homes and switching to a greater reliance on renewables are the key actions which would have the greatest impact. Significantly, the audit completed an analysis of commercial renewable energy generation and solar is the only form of renewables generation in the parish, despite the growth of wind turbines and solar parks in other parks of West Cornwall. The report advocates a focus on securing new community energy projects to bridge this gap.

WHERE DO WE WANT TO BE?

The Council has already made progress in reducing its own carbon footprint, installing the Guildhall solar array, and switching to a 100% renewables energy tariff. But there is far more which could be achieved at a relatively fast pace with the commitment and resources. As carbon reduction can be achieved either by reducing carbon generating activities or capturing the carbon and greenhouse gases we produce, some important capital projects, for example replacing heating systems and refurbishing our buildings provide a clear opportunity to increase electricity generation, reduce energy use and improve thermal efficiency. In addition, the current devolution programme gives us an opportunity to re-imagine our green spaces and give them greater potential to increase carbon capture through planting and re-design. The Council has also begun an ambitious transport project to identify ways to deliver an integrated transport system which works for the town. Getting this right would deliver significant carbon reductions and help towards net zero.

The Council has declared a climate emergency and, like many other organisations is also committed to action which will achieve carbon zero at a faster rate than national targets – by 2030.

Set out below is a detailed action plan which the Council are committed to delivering. It recognises that in many cases the Council will have an influencing or partnership role. In other cases, delivering the action plan will cost time and money. Yet there are many others – highlighted as quick wins where at relatively modest cost, the Council can take small steps along an ambitious path towards 2030.

APPENDIX H

ST IVES TOWN COUNCIL ACTION PLAN						
Theme: . Reducing Our Own Energy Consumption and Waste						
ACTION	OBJECTIVE	LEAD ROLE	Resources	TIMESCALES		
Adequate recycling opportunities for all town owned buildings and spaces	To increase the level of commercial recycling and reduce landfill waste.	Town Council	Capital costs and commercial waste contract fees.	QUICK WIN		
Ensure that all waste from the Council's Guildhall bar is recycled	To increase the level of commercial recycling and reduce landfill waste.	Town Council	Additional commercial waste bins will be required	QUICK WIN	POLICY IN PLACE	✓
Continue to run twice yearly free for all events	To increase the level of domestic recycling and reduce landfill waste.	Town Council	Staff and modest marketing resources.	QUICK WIN	EVENTS SCHEDULED AND POPULAR	✓
Review the Council's single use plastics policy	To reduce the level of single use plastics and landfill	Town Council	The review can be done in house. Some actions may have higher procurement costs	QUICK WIN	NEEDS REVIEW	=
Complete a detailed assessment of the scope for solar arrays on council buildings including the LIS roof	To reduce energy costs and a reliance on fossil fuels.	Town Council	Significant capital investment required but this could be financed through solar loan finance and offset by lower electricity bills	SHORT TERM	PROPOSALS AWAITED FOR BASELINE ASSESSMENT	=
Reducing Community Waste and Consumption						

ACTION	OBJECTIVE	LEAD ROLE	RESOURCES	TIMESCALES	PROGRESS	STATUS
Work with BID to develop a single commercial waste contract for the town.	Encourage the take up of commercial contracts by holiday businesses Increase the level of commercial recycling Switch to more sustainable collection methods	BID	Expertise and funding for technical advice. Staff resources for management and monitoring	MEDIUM TERM	STUDY COMPLETE, OPTIONS BEING CONSIDERED	=
Maintain water stations at West Pier toilets and Palemon Best and secure grant funding for more around the town and on Council land	Reduce the volume of single use plastics	Town Council	officer resources to access capital funds for future facilities. Revenue funding for water supply	QUICK WIN	POLICY IN PLACE	✓
Work with Cornwall Council to re-instate Trenwith recycling facilities and provide more mixed recycling bins in the town centre	Increase the level of community and domestic recycling and reduce the volume of landfill	Influencing Others	Cornwall Council funded service	SHORT TERM	NOT ACHIEVABLE	
Fund and support the continued operation of multi skilled enforcement officers to enforce the St Ives Public Spaces Protection Order	To tackle the incidence of littering and flyposting	Town Council	Revenue costs – to be built into the 2022-23 budget, some match funding from BID.	QUICK WIN	POLICY IN PLACE	✓

Theme: Travel and Transport						
ACTION	OBJECTIVE	LEAD ROLE	RESOURCES	TIMESCALES		
Establish a multi-agency travel and transport group	To develop a low carbon transport plan for the parish	Town Council/Working in Partnership	Staff resources to support the group. Potential revenue costs for commissioning technical advice.	QUICK WIN	GROUP ESTABLISHED	✓
Identify a series of measures contributing to a low carbon transport strategy including Adoption of the cycling and walking strategy Feasibility for a pedestrianisation scheme for the town centre Enhanced low carbon park and ride options Incentives for electric vehicles in the town centre	To develop a low carbon transport plan for the parish	Town Council/Working in Partnership	Large scale capital resources required – external grant funding, for example Town Deal funding	MEDIUM TERM	ACTIVE PROGRAMME OF WORK AND FEASIBILITY ASSESSMENT COMPLETE	=
Work with GWR and lobby for enhancements and developments to the network including passing place to increase branch line trips and timetabling changes, an additional phase of the park and ride scheme at St Erth	Promote shifts away from private motor vehicles to public transport	Influencing Others	Significant capital funds required	LONG TERM	ACTIVE PROGRAMME OF WORK AS PART OF THE TRANSPORT PLAN	=
Work with the Town Deal Board and bus companies to identify scope to introduce low emission smaller buses.	Promote shifts away from cars to public transport and reduce carbon emissions from diesel vehicles	Influencing Others	capital funds required but could be leant on an invest to save basis	MEDIUM TERM	ACTIVE PROGRAMME OF WORK AS PART OF THE TRANSPORT PLAN	=

ACTION	OBJECTIVE	LEAD ROLE	RESOURCES	TIMESCALES	PROGRESS	STATUS
Develop car sharing scheme for Council meetings	Reduce trips by private vehicles	Town Council	No resources required	QUICK WIN	NOT PROGRESSED	x
Continue with remote meetings for non essential and informal Council meetings	Reduce trips by private vehicles	Town Council	No resources required	QUICK WIN	NOT PROGRESSED	x
Secure funding for electric vehicle charging points and electric bikes for staff and Councillors	Reduce CO2 emissions from private vehicles.	Town Council	Grant funding applied for	QUICK WIN	FUNDING SECURED AND MORE POINTS BEING ROLLED OUT IN THE PARISH	✓
Agree that all new Council vehicles (including any from devolution with be electric	Reduce CO2 emissions from vehicle movements	Town Council	£25,000 – can build into capital budgets	MEDIUM TERM	REVIEW BUDGETS FOR 2023-4	=
Support the introduction of an e-car pilot scheme	Reduce CO2 emissions from vehicle movements	Town Council working in partnership	Capital acquisition and maintenance costs £10,000	SHORT TERM	SUPPORT CONFIRMED FROM SURVEY AND SHARED WITH PROVIDERS	✓
Commission an air quality impact assessment for key points on the local road network, prone to traffic queuing	To provide an evidence base for the Transport Strategy	Town Council working in partnership	Technical fees £25,000	SHORT TERM	REQUESTED AS PART OF THE EVIDENCE BASE	=
Support the BID's viability study into the introduction of town investment plan pedestrianisation scheme.	Reduce CO2 emissions from private vehicle movements	BID	Town Deal funding allocation in place	MEDIUM TERM	PROPOSALS IN THE TRANSPORT PLAN	✓
ACTION	OBJECTIVE	LEAD ROLE	RESOURCES	TIMESCALES	PROGRESS	STATUS

Theme: Our buildings and property						
Commission an energy audit for the Town Council and implement recommended actions arising from it. (enhanced insulation, policy of turning off computer screens).	To develop a baseline against which the Council can set energy consumption reduction targets.	Town Council	Would require consultancy fees £8,000	SHORT TERM	QUOTES AND OPTIONS BEING SOUGHT	✓
Review all lighting in Council buildings and replace with LED / low energy bulbs.	To reduce energy consumption	Town Council	Many lights already replaced – external grant funding could support this.	QUICK WIN	NOT PROGRESSED YET	x
Ensure that all new toilet facilities at the Guildhall reduce water and energy consumption	To reduce energy and water consumption	Town Council	May be an additional cost within the tender price	SHORT TERM	WILL BE INCLUDED IN THE SPECIFICATION	=
Identify new measures to reduce water consumption in the public toilets, once the wallgates are removed.	To reduce water consumption	Town Council	Potentially a capital cost. Some provision has been made already for sensor taps etc	SHORT TERM	REVIEWING THE SPEC FOR TAPS	=
Introduce the use of polywood and recycled materials in the repair and maintenance of public realm, for example public benches	To re-purpose plastics and reduce the carbon cost of paint, refurbishment and maintenance	Town Council	Capital costs of bench replacement are built into the new bench programme	SHORT TERM	ROLLING OUT BENCH REPLACEMENT	✓
Identify a new heating solution for the Library and Building and physical measures to reduce energy consumption.	To reduce energy consumption	Town Council	Significant capital costs not yet quantified	MEDIUM TERM	OPTIONS BEING COSTED	✓
ACTION	OBJECTIVE	LEAD ROLE	RESOURCES	TIMESCALES	PROGRESS	STATUS

Develop specific terms and conditions for weddings (local sourcing and no single use plastics), events and hall bookings.	To align with single use plastics and sustainable procurement aims	Town Council	Some modest increase in procurement costs	QUICK WIN	NEW T&CS FOR WEDDINGS BEING DRAFTED	✓
Support local suppliers and businesses through the provision of small commercial and retail premises.	To support sustainable business and producers	Town Council	None	MEDIUM TERM	POLICY NOT PROGRESSED YET	X
Theme: Green Spaces and biodiversity						
Continue to negotiate to secure the devolution of valuable green spaces to the Town Council.	To enhance biodiversity and conserve spaces through higher local management standards	Town Council	Additional staff, equipment and R&M costs. Will be built into future budgets	MEDIUM TERM	DEVOLUTION PLANS SUBMITTED. FUNDING BIDS BEING WORKED UP	✓
Develop an open spaces strategy, following the devolution of open spaces including opportunities for tree planting, community orchards and growing spaces, sustainable play equipment, recycling bins	To enhance biodiversity and conserve spaces through higher local management standards To increase carbon capture	Town Council working in partnership	Some technical advice costs and costs in implementing the strategy	MEDIUM TERM	DEVOLUTION PLANS SUBMITTED. FUNDING BIDS BEING WORKED UP COLLABORATION WITH CORMAC BEING DEVELOPED	=
ACTION	OBJECTIVE	LEAD ROLE	RESOURCES	TIMESCALES	PROGRESS	STATUS

Introduce and support new initiatives on devolved sites to increase community growing, food production and cultivation and Increase allotment and kitchen garden sites within the parish	To increase local and sustainable food production Reduce food miles Develop greater skills, knowledge and awareness about food production	Town Council working in partnership	Some capital costs to re-purpose and develop sites	SHORT TERM	DEVOLUTION PLANS SUBMITTED. FUNDING BIDS BEING WORKED UP COLLABORATION WITH CORMAC BEING DEVELOPED	=
Develop new management standards for any green or open space in management including the cutting regime and the use of chemicals and planting strategies	Protect bio-diversity Reduce the use of harmful and unnecessary chemicals	Town Council	Some capital costs to re-purpose and develop sites, offset but reduced maintenance	SHORT TERM	DEVOLUTION PLANS SUBMITTED. FUNDING BIDS BEING WORKED UP COLLABORATION WITH CORMAC BEING DEVELOPED	=
Take advantage of all opportunities for funds to support tree planting and develop a tree management plan for all sites within the Council's ownership.	To increase carbon capture	Town Council working in partnership	Some costs for tools and equipment but seek to fund through external grant programmes	SHORT TERM	WORKING WITH THE STEEPLE WOODS TO PLANT JUBILEE TREES IN THE AUTUMN.	=
Explore the roll out of additional wild verges scheme	To increase carbon capture Protect bio-diversity	Influencing Others	Project costs for design and on-going maintenance	MEDIUM TERM	DEVOLUTION PLANS SUBMITTED. FUNDING BIDS BEING WORKED UP COLLABORATION WITH CORMAC BEING DEVELOPED	=
ACTION	OBJECTIVE	LEAD ROLE	RESOURCES	TIMESCALES	PROGRESS	STATUS

Forest for Cornwall champions	To increase carbon capture Protect bio-diversity	Influencing Others	None	QUICK WIN	NOT PROGRESSED CURRENTLY	X
Theme: Procurement and Contracts and decision making						
Introduce environmental proofing for all policy decisions	To choose policy decisions which have the lowest environmental impact	Town Council	There may be resource implications for choosing a specific course of action.	QUICK WIN	CAN BE INCORPORATED INTO REPORT TEMPLATES FOLLOWING ADOPTION	=
Pledge support to greater Government action including becoming a supporter to the Climate Action and Ecology Bill	To set more challenging targets to achieve net zero	Influencing Others	None	QUICK WIN	PLEDGE SUBMITTED	✓
Continue to procure renewables energy contracts for Council owned buildings	To reduce the carbon footprint of the Council's buildings	Town Council	Significant annual budget increases linked to this >£5,000	SHORT TERM	CONTRACT PRICES BEING REVIEWED FOR MARCH 2023.	=
Ask for environmental statements from all potential contractors and build this into tendering alongside price and quality	To deliver sustainable procurement goals	Town Council	May be some increase in procurement costs for some products	QUICK WIN	CAN BE BUILT INTO CONTRACTS THROUGH THE SOCIAL VALUE ACT	✓
Request that all goods are packaged with recyclable packaging	To deliver sustainable procurement goals	Town Council	May be some increase in procurement costs for some products	QUICK WIN	BEGINNING TO ROLL OUT WITH THE TEAM	✓
ACTION	OBJECTIVE	LEAD ROLE	RESOURCES	TIMESCALES	PROGRESS	STATUS

Reduce a delivery miles policy which opts for orders with the shortest journeys (for items of comparable quality and price) and accreditation schemes such as planet mark.	To deliver sustainable procurement goals	Town Council	May be some increase in procurement costs for some products	QUICK WIN	CAN BE BUILT INTO A SUSTAINABLE PROCUREMENT POLICY	X
Review standing orders and financial regulations to support local sustainable procurement	To deliver sustainable procurement goals	Town Council	May be some increase in procurement costs for some products	QUICK WIN	INCLUDED IN T&CS	✓
Buy second hand or recycled goods (where the performance and specification isn't compromised).	To deliver sustainable procurement goals	Town Council	May be some increase in procurement costs for some products	QUICK WIN	POLICY IN PLACE	✓
Theme: Planning						
Commission an air quality impact assessment for critical areas in the parish – Lelant, Library Corner, Market Plan and the impact of queuing on local road network, prone to traffic queuing	To provide an evidence base for the NDP and Transport Plan	Town Council working in partnership	Technical fees £25,000	SHORT TERM	REQUESTED THROUGH THE TRANSPORT PLAN	=
Review the Neighbourhood Plan in terms of climate change measures: – Support and contribute to Cornwall Council planning policies -	To develop a carbon net zero policy framework for decision making	Town Council working in partnership	Revenue resources for staff and technical policy support – grant funding can be accessed for NDP work.	MEDIUM TERM	REVIEW IS BEGINNING EXPLORING ADDITIONAL MEASURES ABOVE CORNWALL COUNCIL CLIMATE CHANGE DPD	=
Influence and comment work commissioned by Cornwall Council to review Landscape character assessments	To protect bio-diversity and carbon capture.	Influencing	Resource neutral	MEDIUM TERM	ACTION NOT YET PROGRESSED	X
ACTION	OBJECTIVE	LEAD ROLE	RESOURCES	TIMESCALES	PROGRESS	STATUS

Reflect an assessment of energy efficiency and sustainability measures in considering planning applications	To reduce the carbon footprint of new and refurbished buildings and homes	Influencing	Resource Neutral	QUICK WIN	GUIDANCE SOUGHT FROM CC, WILL CARRY GREATER WEIGHT WHEN THE DPD IS ADOPTED	=
Theme: Working with others						
Support the development of a local repair shop	To increase the amount of goods which are re-used and not sent to landfill	Community Orchard	Resource Neutral	SHORT TERM	IN THE ORCHARD'S PLANS – LETTER OF SUPPORT GIVEN	✓
Promote involvement and engagement with local groups leading litter picks/beach cleans	To raise awareness about environmental quality and improve the cleanliness of beaches and open spaces	Town Council working in partnership	Provide resources and equipment to local groups Promote volunteering through social media and public information platforms	QUICK WIN	ALREADY IN POLICY – EXPLORING MORE SPONSORED LITTER PICKER KITS	✓
Understand scope with the Environment Act for greater enforcement powers to improve air quality	Carbon reduction	Influencing Others	Resource Neutral	SHORT TERM	NOT YET PROGRESSED	X
Support key local environmental projects including the Orchard and Steeple Woods Management Trust	To protect bio-diversity and carbon capture.	Town Council working in partnership	Potentially funding from the community grants pot	SHORT TERM	ENCOURAGING GRANTS FROM LOCAL ENVIRONMENTAL GROUPS. SUPPORT START UP OF CIC	✓
ACTION	OBJECTIVE	LEAD ROLE	RESOURCES	TIMESCALES	PROGRESS	STATUS

Champion the introduction of a community forestry officer for St Ives	To protect bio-diversity and carbon capture.	Town Council working in partnership	Potentially funding from the community grants pot and support external grant funding	SHORT TERM	ENCOURAGING GRANTS FROM LOCAL ENVIRONMENTAL GROUPS. SUPPORT START UP OF CIC	=
Work with BID and local businesses to develop a climate action visitor charter including measures to Eliminate the sale of single use plastic toys and games (buckets, spades and surf boards) Buy locally made and sourced goods Buy their groceries in local shops and avoid on-line deliveries Use park and ride schemes and limit the use of their vehicles	To promote sustainable purchasing and reduce single use plastics	BID	Some staffing and marketing resources to support BID	SHORT TERM	SUBMITTED DRAFT PLAN TO BID – ASK THEM TO PUT IT ON THE AGENDA FOR SEPTEMBER BOARD MEETING	=
ACTION	OBJECTIVE	LEAD ROLE	RESOURCES	TIMESCALES		
Develop a beach re-used and recycled goods library	To reduce marine pollution and single use plastics	Town Council working in partnership	Modest marketing and project resources	SHORT TERM	IN DISCUSSIONS ABOUT BEACH TOY LIBRARY	✓
Promote wooden surf boards	To reduce marine pollution and single use plastics	BID	Modest marketing and project resources	QUICK WIN	IN DISCUSSIONS ABOUT BEACH TOY LIBRARY	✓
Work with BID to develop and update a directory of local producers and use it in the promotion of local and sustainable procurement.	To promote sustainable purchasing/reduce single use plastics	BID	Some staffing and marketing resources to support BID	SHORT TERM	COMPLETED AS PART OF WELCOME BACK	✓